



Industry Session #: Energy Harvesting Optimizing Piezoelectric Synchronized-Discharge Harvesters

Presented By –

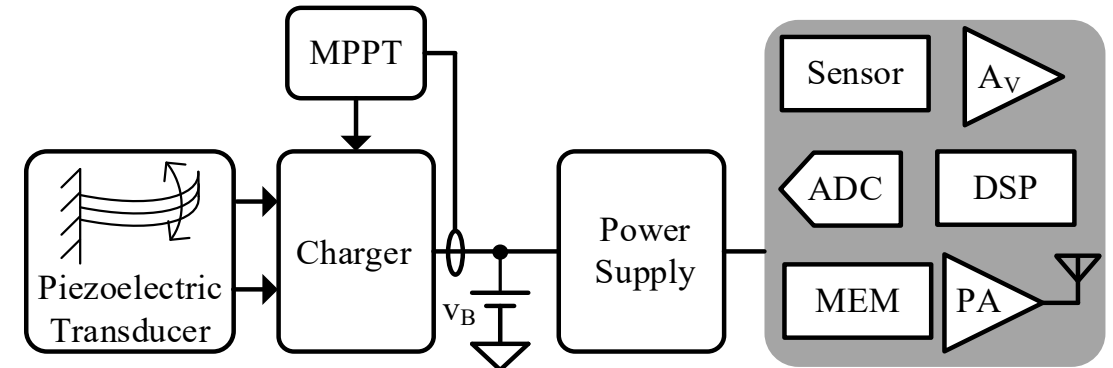
Siyu Yang and Gabriel A. Rincón-Mora

Samsung Semiconductor Inc¹ and Georgia Institute of Technology²
jimsyyang@gatech.edu^{1,2}, Rincon-Mora@gatech.edu²

Wednesday, March 18, 2020

OVERVIEW

- Piezoelectric-Powered Sensors
- State of the Art
- Pre-Charge Symmetry
- Energy Transfers
- Output Power Comparison
- Conclusions



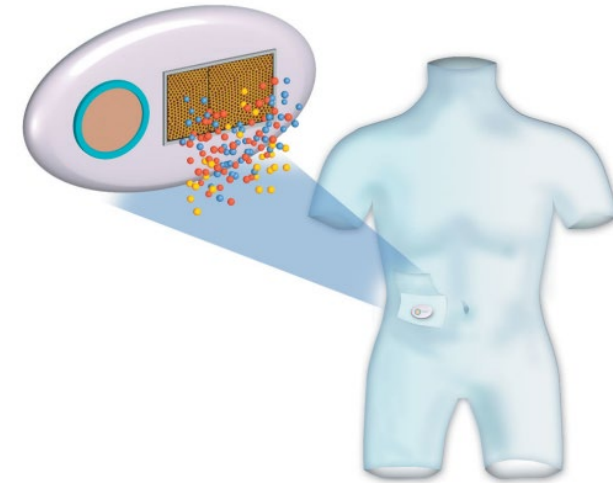
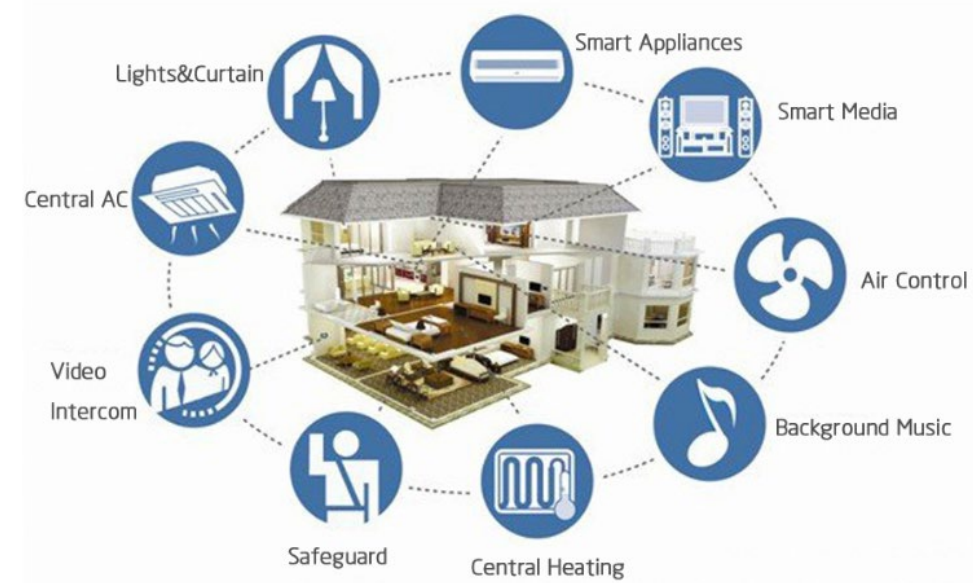
Piezoelectric-Powered Sensors

- **Wireless Microsensors**

- Smart homes
- Embedded Health Monitors
- Vehicles
- Industry

- **Features**

- Environment and health monitoring
- Automated home appliances and alarms
- Automated pipelines
- Saves money, energy, and lives



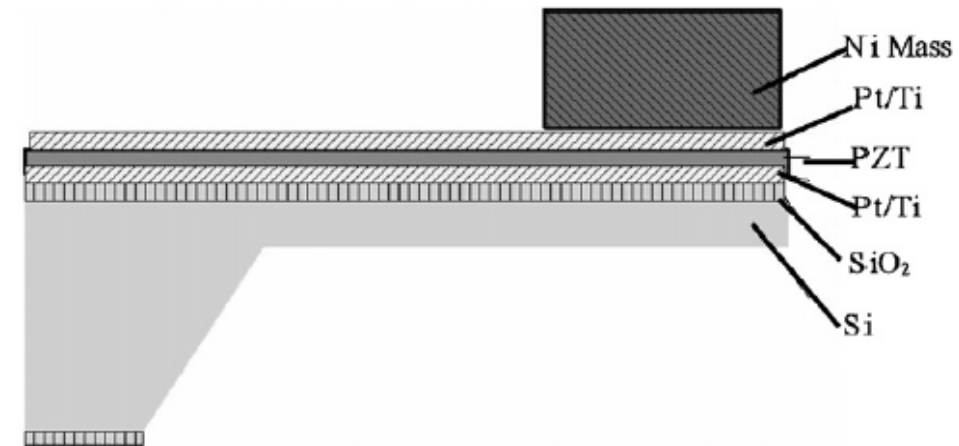
Piezoelectric-Powered Sensors

- **Wireless Microsensors Requirements**

- Add intelligence
 - Processor
 - Sensor
 - Transmitter
- Access difficult places
- Compact, self-powered

- **Ambient energy sources**

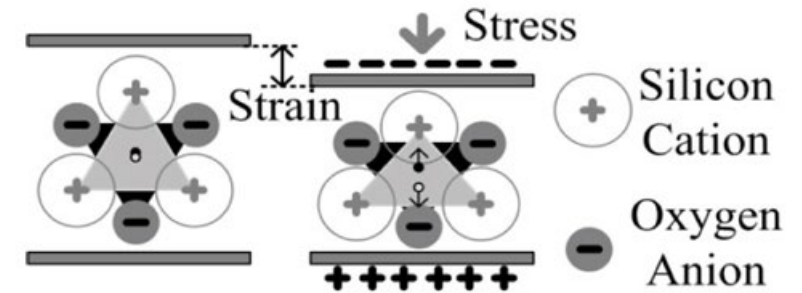
- Light
- Temperature
- Radiation
- Chemical
- Motion
 - Electromagnetic
 - Electrostatic
 - Piezoelectric ✓



Piezoelectric Powered Sensors

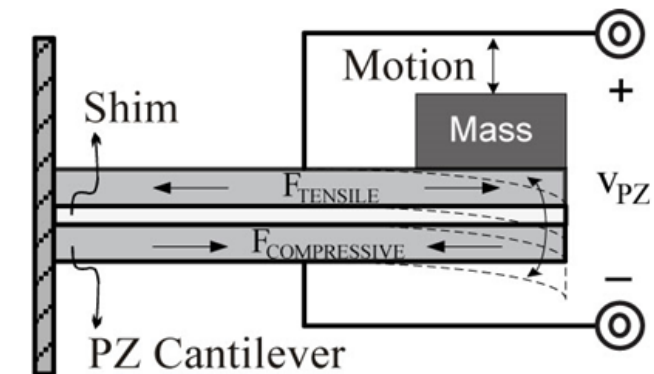
- **Piezoelectric material**

- Non symmetrical positive and negative charge
- Charge center shifts when strained
- Charge appears at the surface



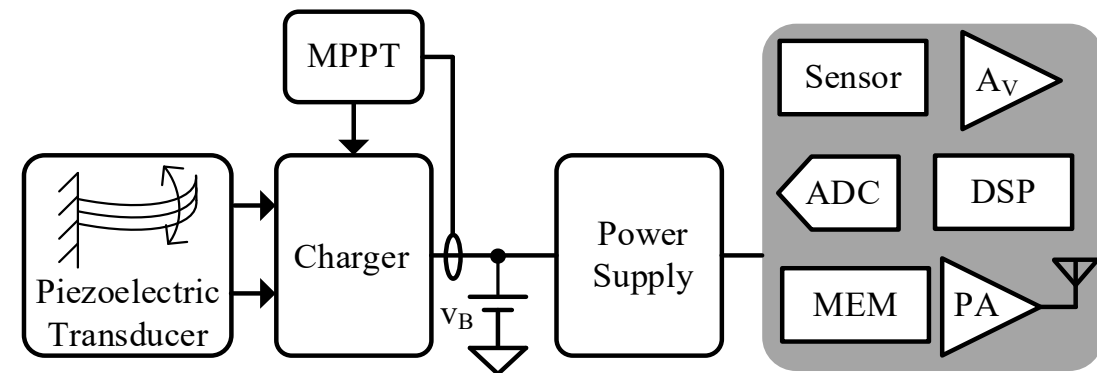
- **Piezoelectric transducer**

- Cantilever with mass
- Mass vibration → alternating charge



- **Piezoelectric system**

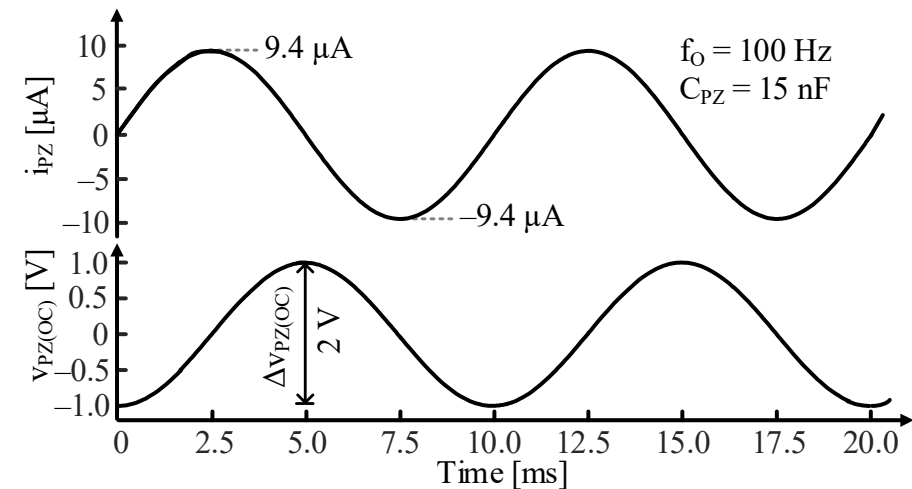
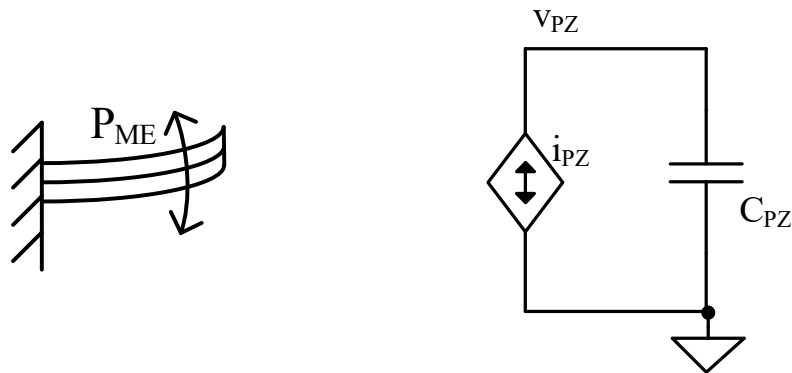
- Charger charges battery
- MPPT tracks max. power point
- Battery supplies loads



Piezoelectric Powered Sensors

- **Operation:** Vibration \rightarrow i_{pZ} charges C_{pZ}
- **Limit:** **Low** mechanical-electrical coupling factor
 - \therefore Vibration unaffected by voltage across C_{pZ}
 - \therefore i_{pZ} & $\Delta v_{pZ(OC)}$ stays the same for each half cycle
- **Solution:** Increase $v_{pZ} \rightarrow i_{pZ}$ charges C_{pZ} at **higher voltage**

\rightarrow **More drawn power**



- **Limits:** Charger consumes **power losses**, and imposes **breakdown** limits
- **Objective:** Build charger with the highest drawn power, lowest losses, and least constraints.

State of the Art

- **Basic Full Bridge**

Operation: Diodes steer i_{PZ} into C_{REC}

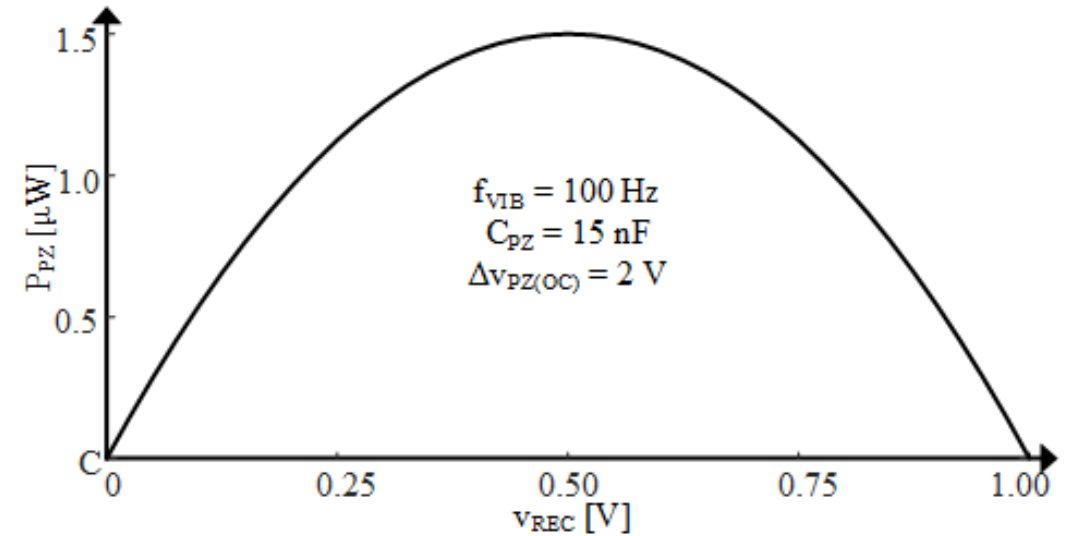
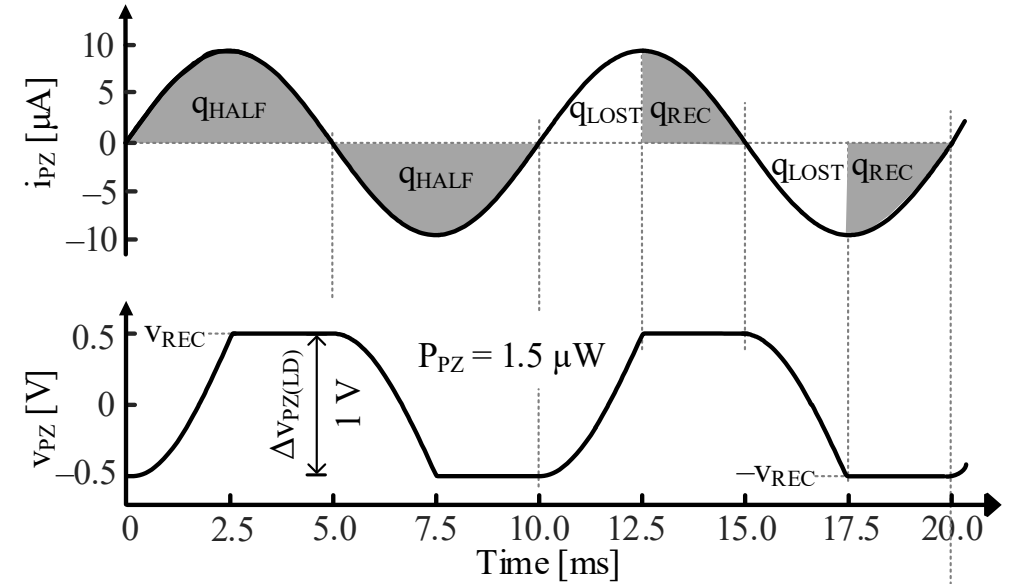
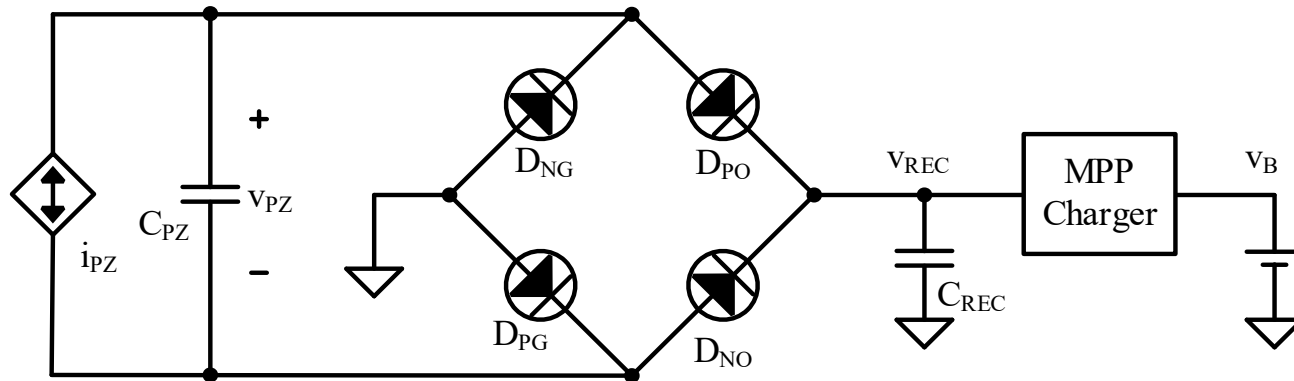
Feature: Charge C_{REC} **autonomously**

Limits:

Half of the charge **lost**

P_{PZ} **varies with v_{REC}**

∴ MPP charger regulates v_{REC}



State of the Art

- Switched Inductors

Operation:

i_{PZ} charges v_{PZ} across half cycles

L_X collects charge and charge battery

Features:

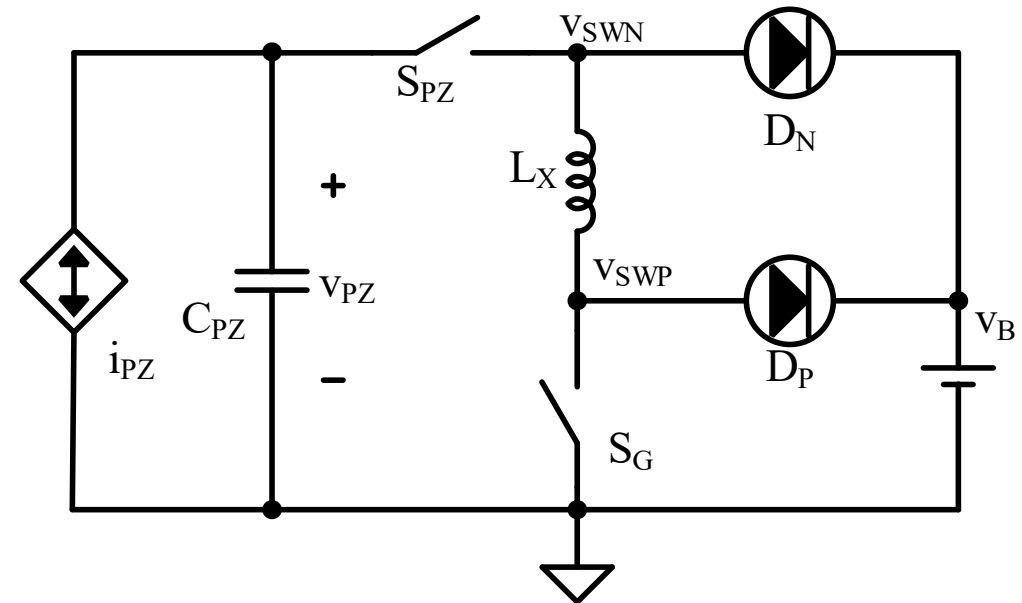
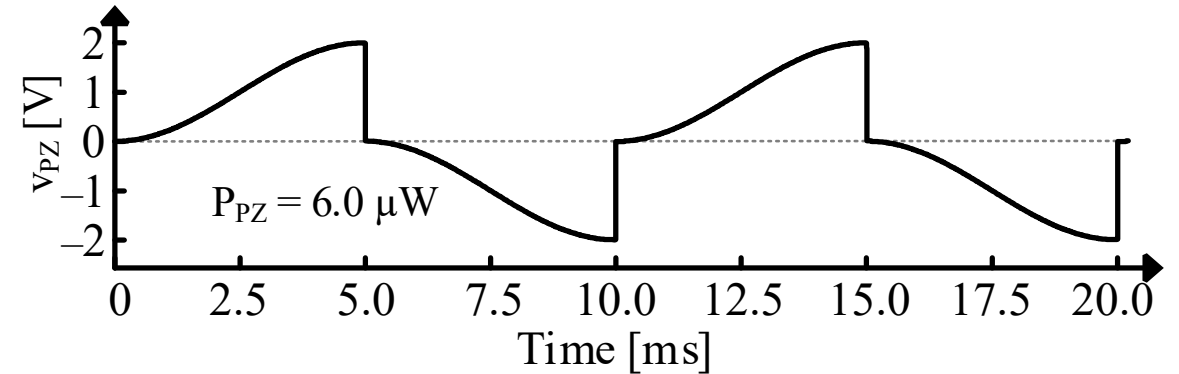
Collect **all charge**

Charge **battery directly**

Limits:

Need **synchronizer**

$$P_{PZ} \propto \Delta v_{PZ(OC)}^2$$



State of the Art

- Pre-Charging

Operation:

Before negative half cycle, pre-charge to $-v_{PC}$

i_{PZ} is collected at higher v_{PZ} , \rightarrow higher P_{PZ}

Features:

Collect all **charge**

Charge battery **directly**

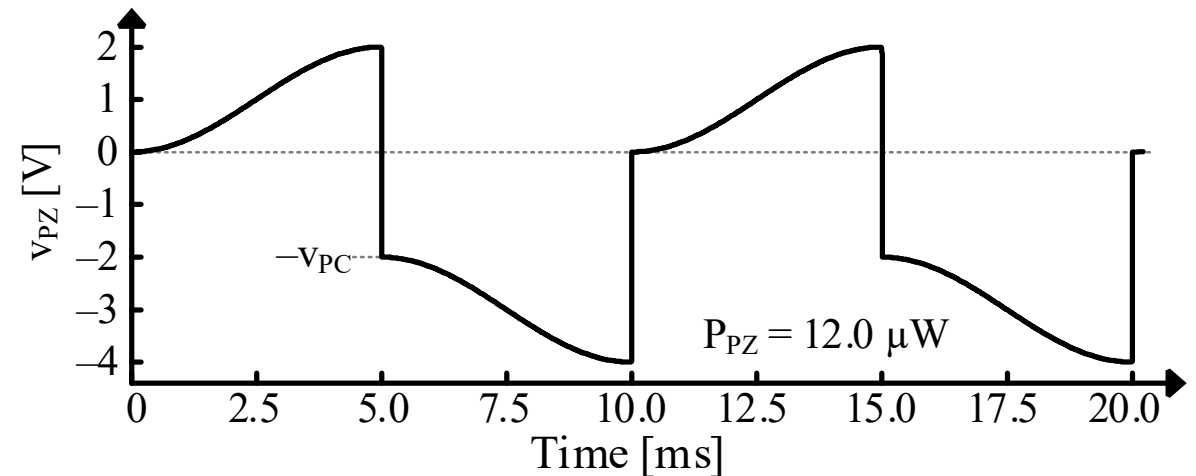
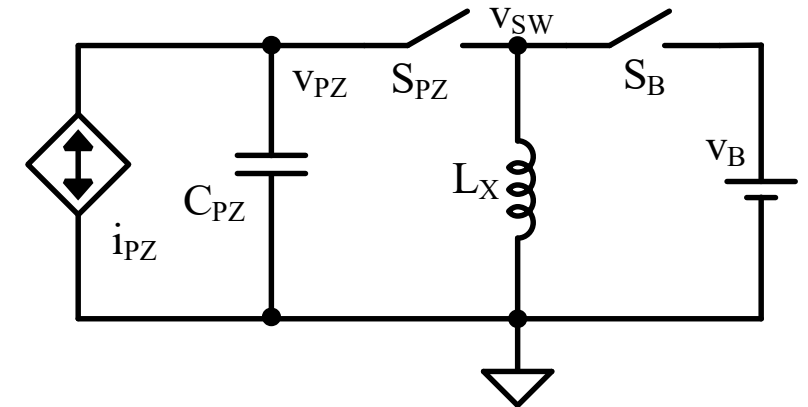
2 switches

$$P_{PZ} \propto \Delta v_{PZ(OC)} (\Delta v_{PZ(OC)} + v_{PC})$$

Limits:

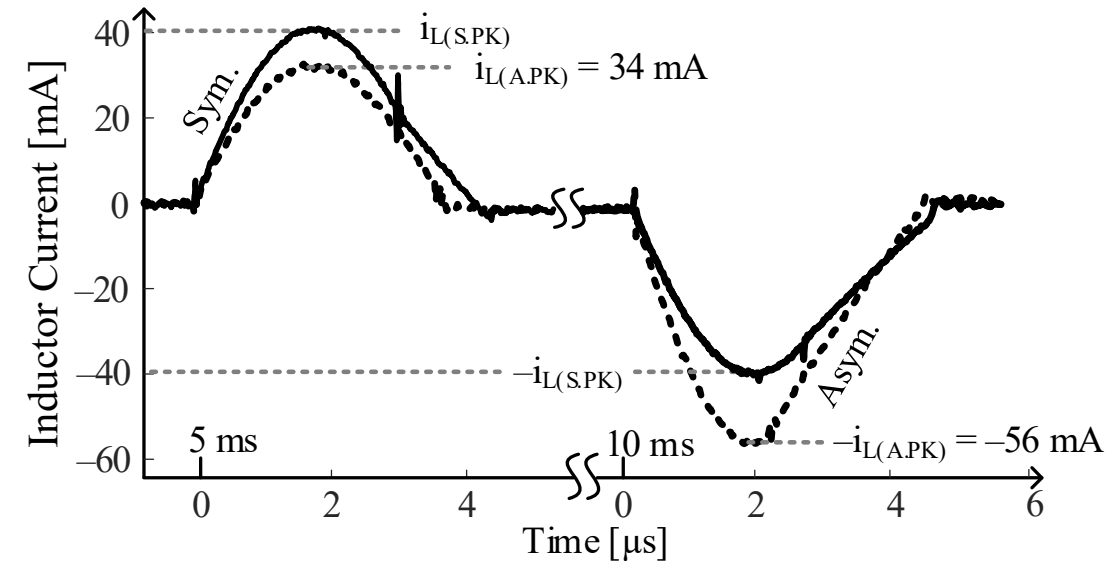
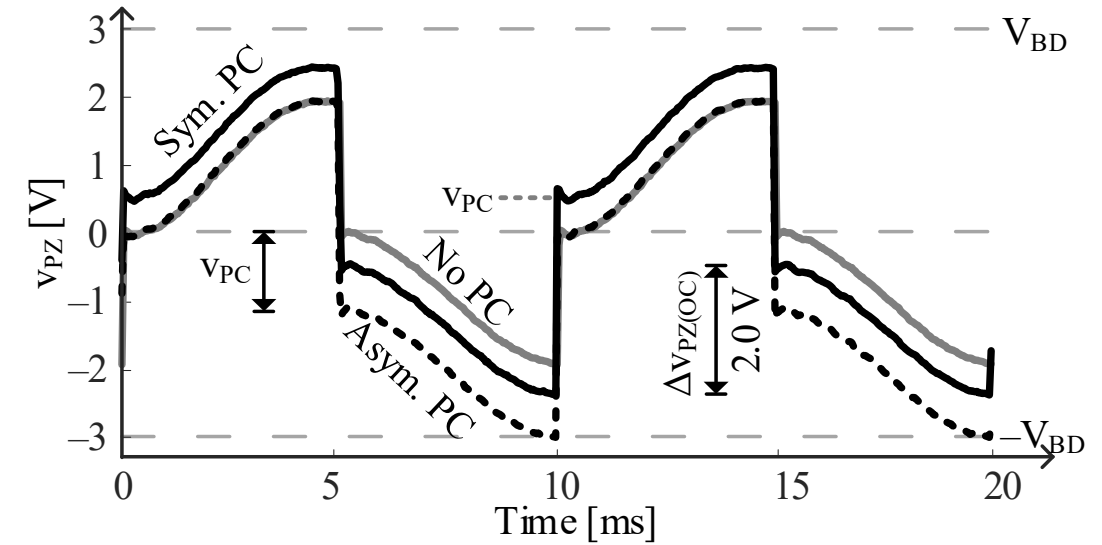
Need **synchronizer**

Need **negative supply**



Pre-charge Symmetry

- **Symmetrical**
 - Pre-charge before each half cycle
 - Reuse some energy at the end
- **Asymmetrical**
 - No pre-charge before positive half
 - Use all the energy at the end of positive half cycle to pre-charge
 - Higher ohmic loss because of higher peak current



Energy Transfers

- Indirect Transfers

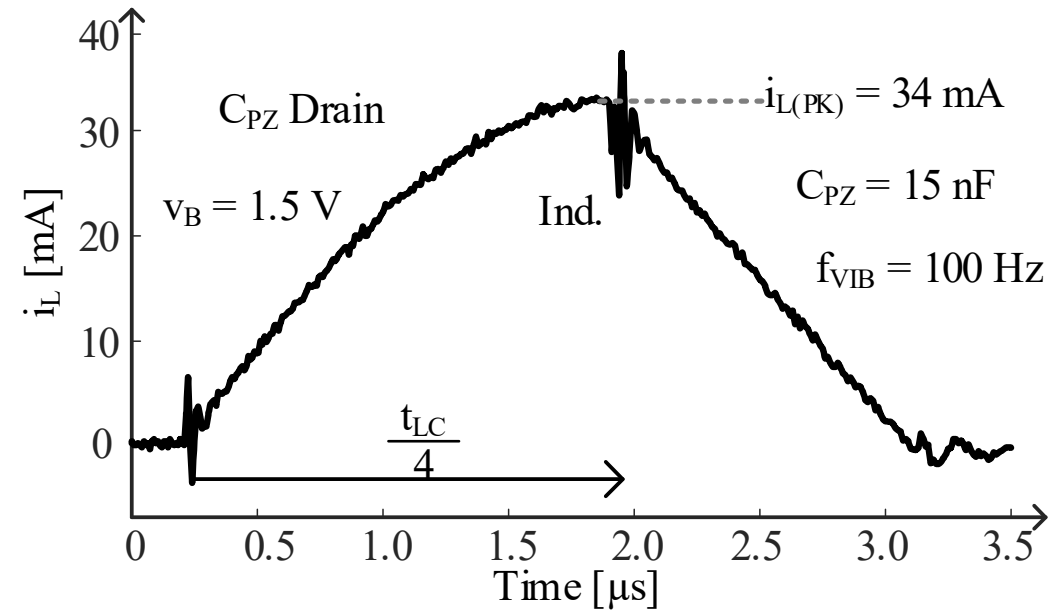
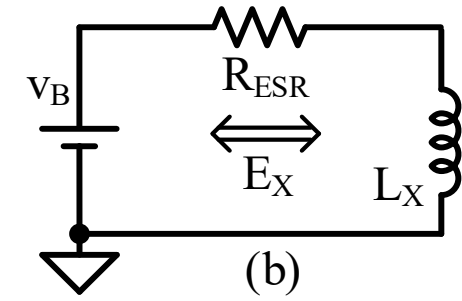
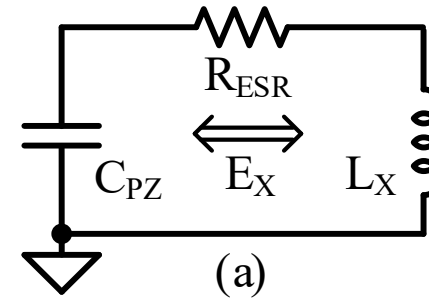
- Operation

- C_{PZ} energizes L_X for $0.25 t_{LC}$
 - L_X then charges v_B

- L_X : Draws and delivers all P_{PZ}
 \therefore High $i_{L(PK)}$ & transfer time t_X

- Ohmic loss $\propto i_{L(PK)}^2 t_X$

- C_{PZ} never connects directly to v_B
 \therefore Indirect transfers

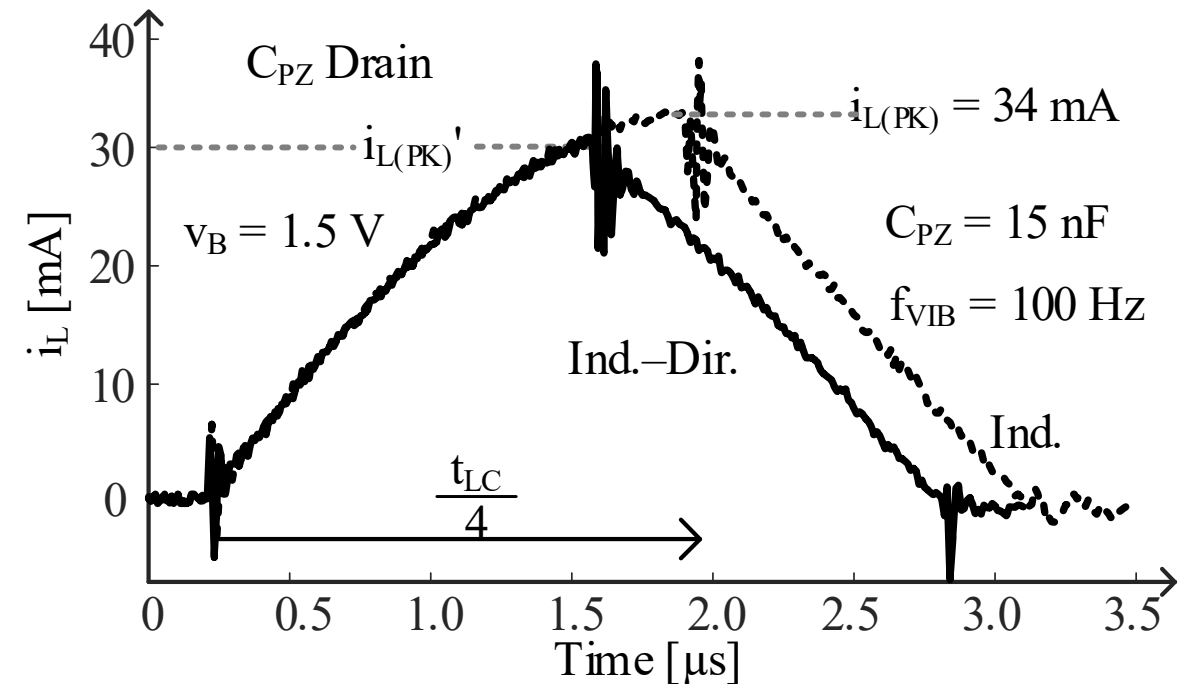
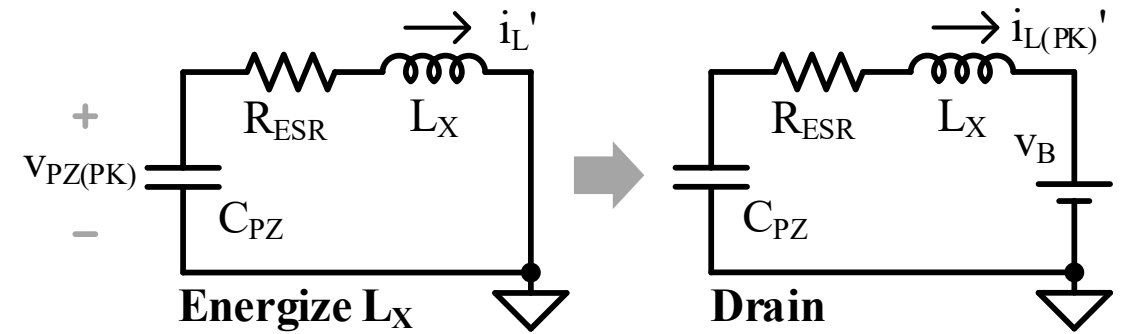


Energy Transfers

• Indirect–Direct

▪ Operation

- C_{PZ} energizes L_X for less than $0.25 t_{LC}$
- C_{PZ} and L_X then charge v_B
- v_{PZ} falls sinusoidally
- i_L also falls sinusoidally
- L_X : steers energy it does not hold
 - ∴ Lower $i_{L(PK)}$ & $t_X \rightarrow$ Lower loss
- C_{PZ} directly charges v_B
 - ∴ Indirect–direct transfers



Energy Transfers

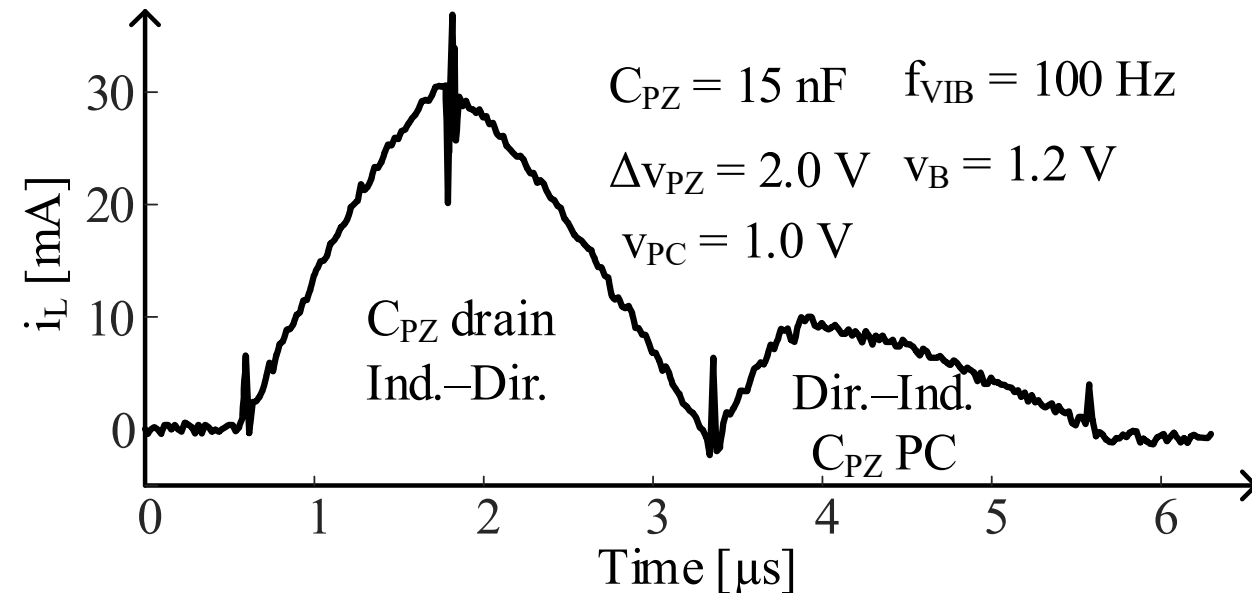
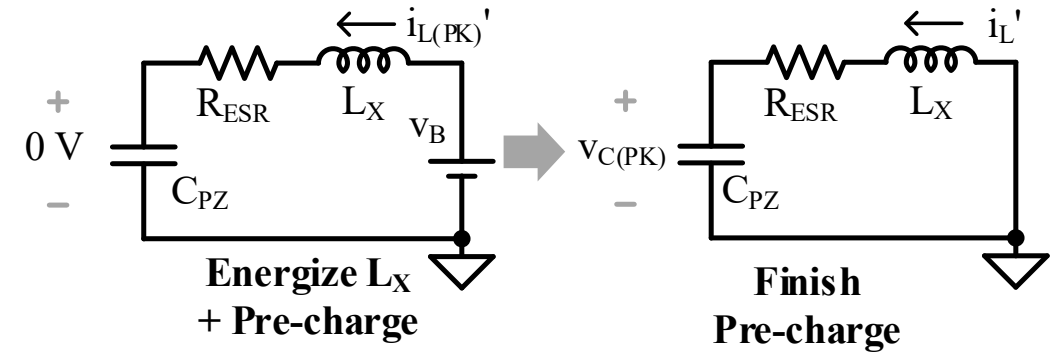
• Indirect–Direct with PC

■ Operation:

- After draining C_{PZ} , negative pre-charge
- v_B first directly charges C_{PZ} and L_X
- L_X then drains into C_{PZ}

■ L_X : steers energy it does not hold

∴ Lower $i_{L(PK)}$ & $t_X \rightarrow$ Lower loss



Energy Transfers

• Direct–Indirect

■ Operation:

○ C_{PZ} and L_X charge v_B until C_{PZ} drains

v_{PZ} falls sinusoidally around v_B

i_L increases then falls sinusoidally

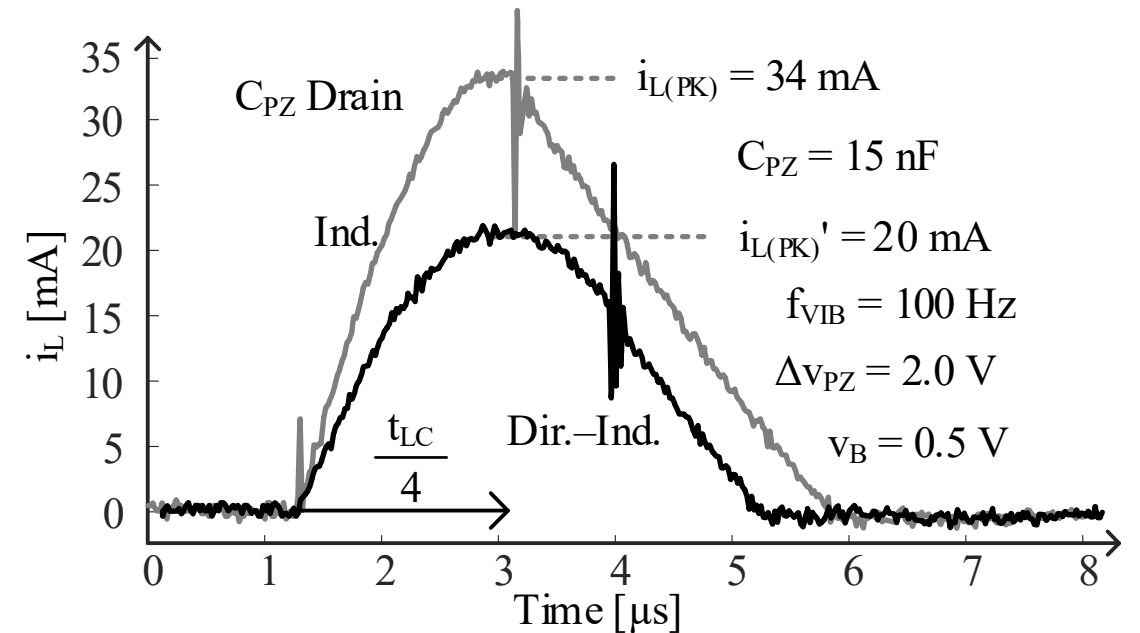
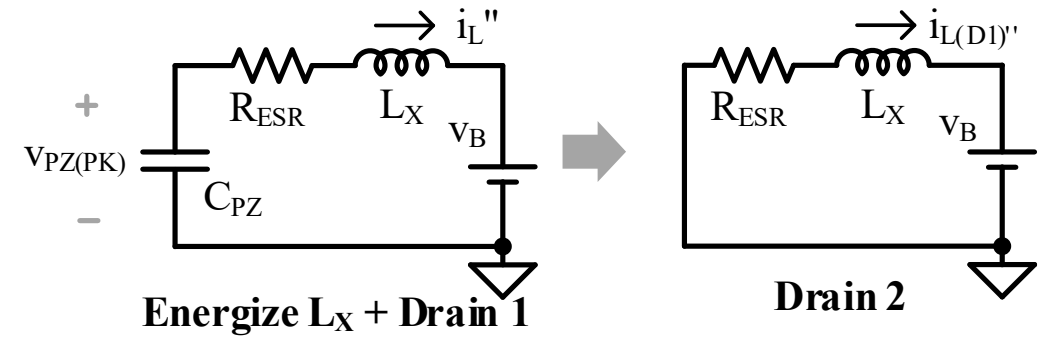
○ L_X then charges v_B linearly

■ L_X : steers energy it does not hold

∴ Lower $i_{L(PK)}$ & transfer time

■ C_{PZ} directly charges v_B

∴ Indirect–direct transfers



Energy Transfers

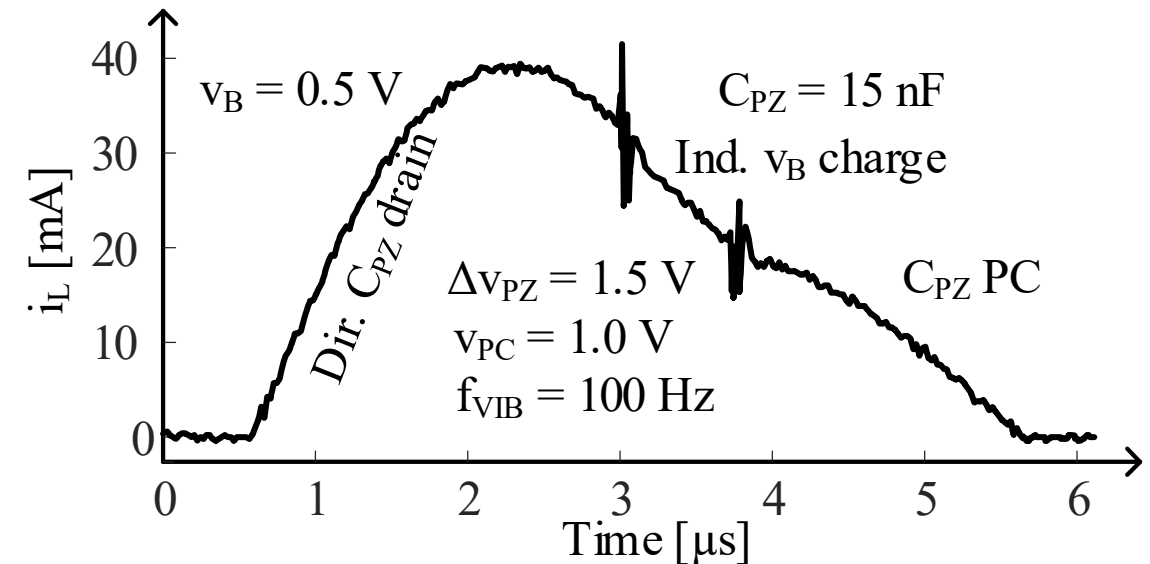
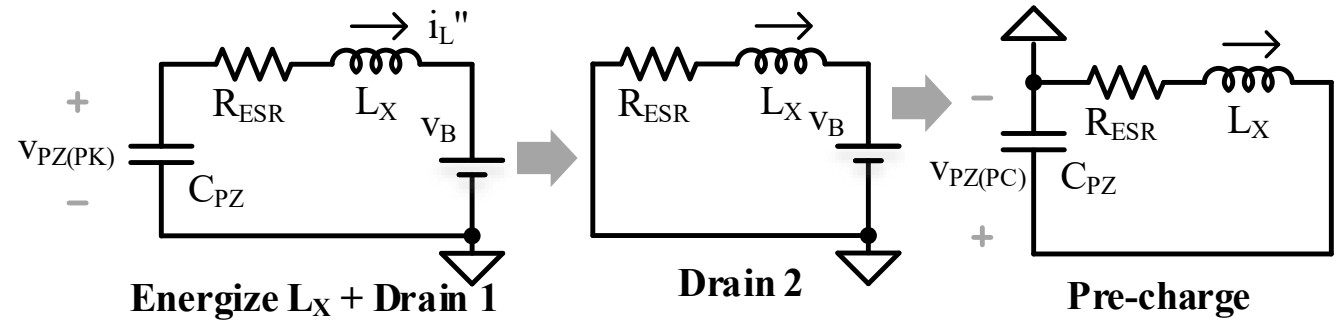
• Direct-Indirect with PC

▪ Operation:

- C_{PZ} and L_X charge v_B until C_{PZ} drains
- L_X charges v_B , but stops before it drains
- Remaining energy in L_X charges C_{PZ}

▪ L_X : steers energy it does not hold

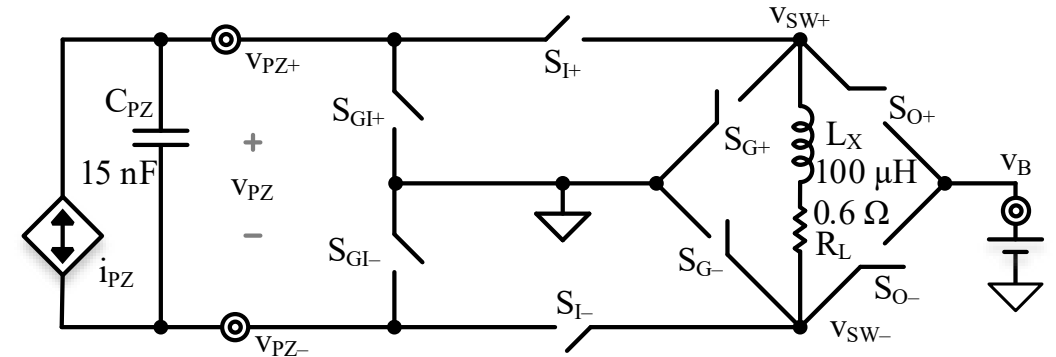
∴ Lower $i_{L(PK)}$ & t_X



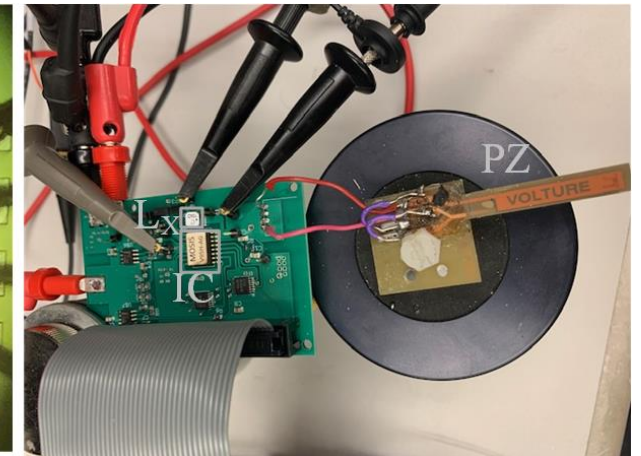
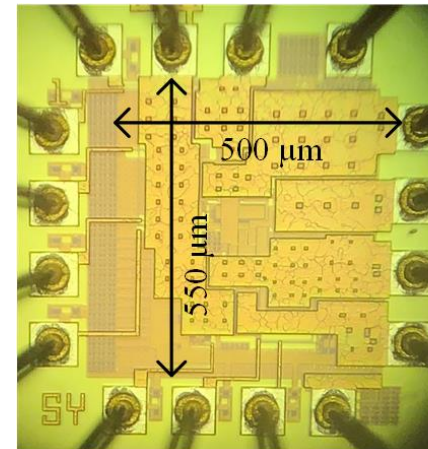
Output Power Comparison

- **Prototype**

- Taped out using TSMC 180nm CMOS

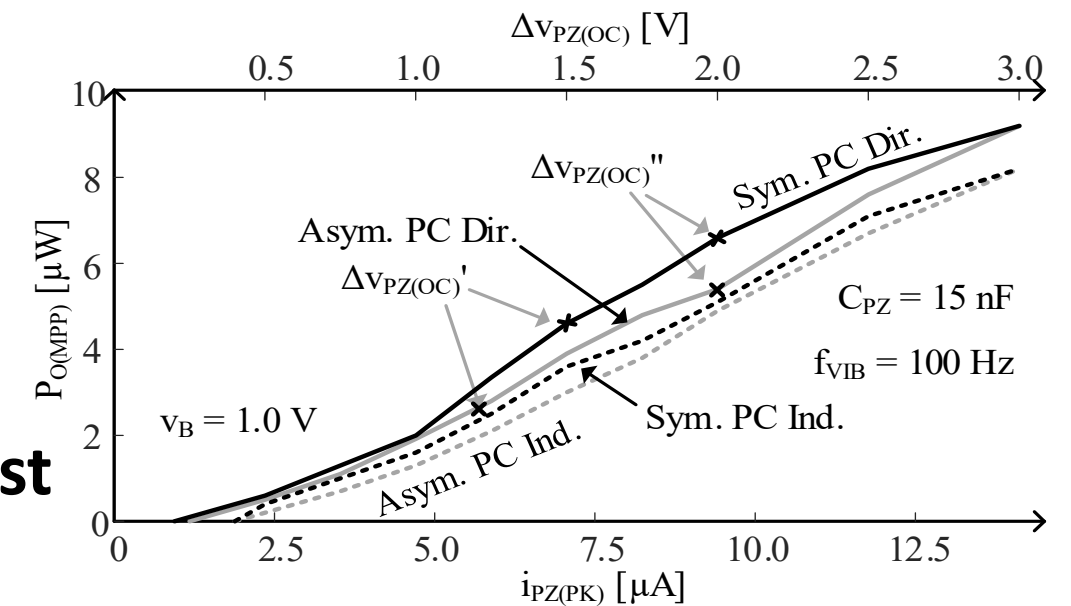
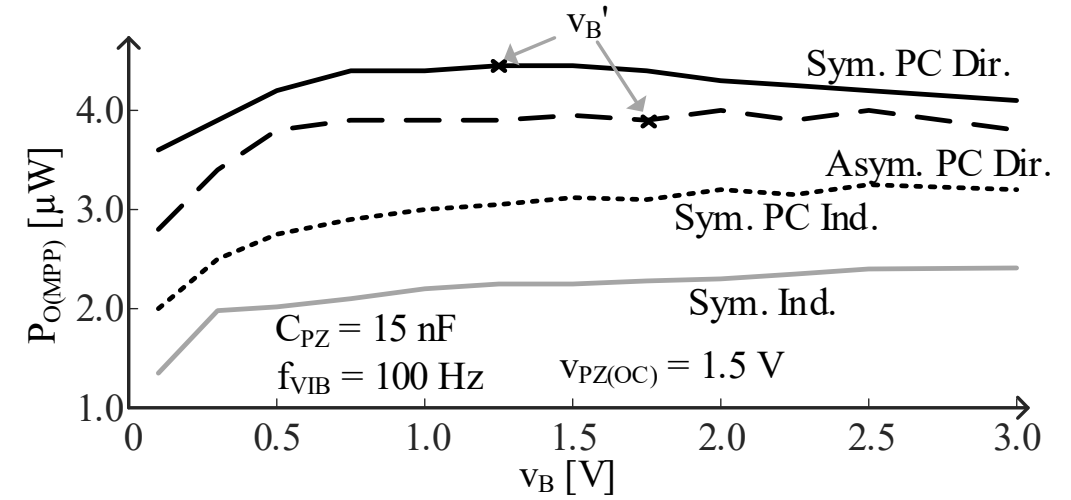


Switch	Type	L [nm]	W [mm]	R _{MIN} [Ω]
S _{GI+/-}	N	350	3.8	1.2
S _{I+/-}	N	350	3.2	1.1
	P	300	7.2	0.93
S _{G+/-}	N	350	2.2	0.82
S _{O+/-}	P	300	4.3	1.5



Output Power Comparison

- In all modes, P_O is not sensitive to v_B
 - No additional stage required
- Pre-charging increases drawn power
- $P_{O(SYM)} > P_{O(ASYM)}$
 - Lower ohmic loss because of lower peak current
 - Lower breakdown limit
- $P_{O(DIR)} > P_{O(IND)}$
 - Lower ohmic loss because of lower peak current
- Symmetrical Direct Pre-Charge is the best

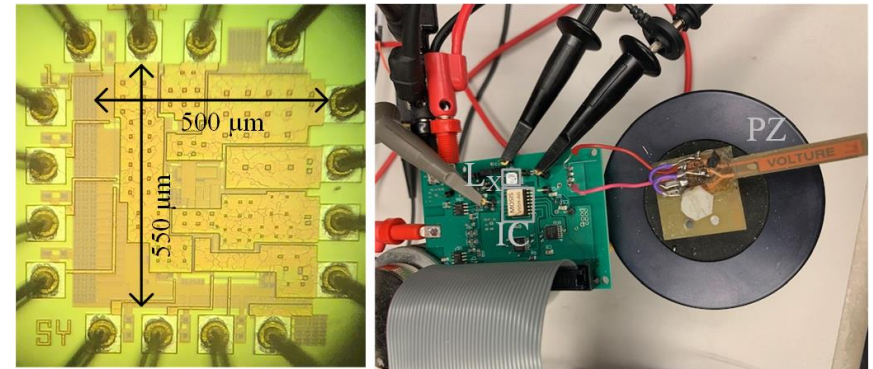


Output Power Comparison

	JSSC [11]	TPE [12]	JSSC [13]	This Work			
Mode	Asym. PC Ind.	Sym. PC Dir.	Sym. PC Ind.	Asym. PC Ind.	Sym. PC Ind.	Asym PC Dir.	Sym. PC Dir.
C_{PZ}	15 nF	17 nF	20 nF	15 nF	15 nF	15 nF	15 nF
f_{VIB}	143 Hz	120 Hz	140 Hz	100 Hz	100 Hz	100 Hz	100 Hz
$i_{PZ(PK)}$	8.2–36 μ A	3.0–33 μ A	11 μ A	2.3 – 14 μ A	1.8 – 14 μ A	1.4 – 14 μ A	0.9 – 14 μ A
$\Delta V_{PZ(OC)}$	1.2–5.2 V	0.5–5.5 V	1.2	0.5–3.0 V	0.4–3.0 V	0.3–3.0 V	0.2–3.0 V
V_{BD}	15 V	5.5 V	> 7.0 V	3.0 V	3.0 V	3.0 V	3.0 V
L_x	330 μ H	330 μ H	340 μ H	100 μ H	100 μ H	100 μ H	100 μ H
P_o	2.1–53 μ W	0.7–49 μ W	15 μ W	0 – 7.9 μ W	0 – 7.9 μ W	0 – 9.1 μ W	0 – 9.1 μ W
η_o	2.6x–3.5x	3.2x–6.8x	14x	2.8x–6.6x	2.8x–7.2x	3.3x–10.5x	3.3x–15.5x

Conclusions

- Symmetrical pre-charge can output the most power
 - Symmetrical pre-charge has lower peak inductor current \therefore **Lower loss**
 - Asymmetrical reaches breakdown limit sooner \therefore **Lower drawn power**
 - Indirect transfer uses the inductor to transfer all energy \therefore **High i_L , high loss**
 - Direct transfers allows inductor to transfer more energy than it carries \therefore **Lower i_L , lower ohmic loss**
- Symmetrical pre-charge losses 20% less power.
- With more output power, charger avails microsystems more functions and longer life.



Q & A

Thanks a lot for your time and attention!

Any questions and/or comments?

References

- D. Puccinelli and M. Haenggi, “Wireless sensor networks: applications and challenges of ubiquitous sensing,” *IEEE Circuits and Syst. Mag.*, vol. 3, no. 3, pp. 19–29, 2005.
- S. Roundy, P.K. Wright, and J. Rabaey, “A study of low level vibrations as a power source for wireless sensor nodes,” *Comput. Commun.*, vol. 26, no. 11, pp. 1131–1144, Jul. 2003.
- S. Suduvalayam and P. Kulkarni, “Energy harvesting sensor nodes: Survey and implications,” *IEEE Commun. Surveys Tut.*, vol. 13, no. 3, pp. 443–543 461, Jul.–Sep. 2011.
- A. B. A. Dow, A. Bittner, U. Schmid, and N.P. Kherani, “Design, fabrication and testing of a piezoelectric energy microgenerator,” *Microsyst. Tech.*, vol. 20, no. 4–5, pp. 1035–1040, Apr. 2014.
- A. Hajati and S.G. Kim, “Ultra-wide bandwidth piezoelectric energy harvesting,” *Applied Phys. Letters*, vol. 99, no. 8, Aug. 2011.
- J. Liu, H. Fang, Z. Xu, X. Mao, X. Shen, D. Chen, H. Liao, and B. Cai, “A MEMS-based piezoelectric power generator array for vibration energy harvesting,” *Microelectronics J.*, vol. 39, no. 5, pp. 802–806, May 2008.
- G.A. Rincón-Mora and S. Yang, “Tiny piezoelectric harvesters: Principles, constraints, and power conversion,” *IEEE Trans. on Circuits Syst. I*, vol. 63, no. 5, pp. 639–649, May 2016.
- Y.K. Ramadass and A.P. Chandrakasan, “An efficient piezoelectric energy harvesting interface circuit using a bias-flip rectifier and shared inductor,” *IEEE J. of Solid-State Circuits*, vol. 45, no. 1, pp. 189–204, Jan. 2010.
- Y.C. Chu, I. C. Lien, and W.J. Wu, “An improved analysis of the SSHI interface in piezoelectric energy harvesting,” *Smart Mater. Struct.*, vol. 16, no. 6, pp. 2253–2264, Oct. 2007.
- S. Yang and G.A. Rincón-Mora, “Energy-harvesting piezoelectric-powered CMOS series switched-inductor bridge,” *IEEE Trans. on Power Electronics*, vol. 34, no. 7, pp. 6489–6497, July 2019.
- D. Kwon and G.A. Rincón-Mora, “A single-inductor 0.35- μm CMOS energy-investing piezoelectric harvester,” *IEEE J. of Solid-State Circuits*, vol. 49, no. 10, pp. 2277–2291, Oct. 2014.
- K.S. Yoon, S.W. Hong, and G.H. Cho, “Double pile-up resonance energy harvesting circuit for piezoelectric and thermoelectric materials,” *IEEE J. of Solid-State Circuits*, vol. 53, no. 4, pp. 1049–1060, Apr. 2018.
- G. K. Ottman, H. F. Hofmann, A. C. Bhatt, and G. A. Lesieutre, “Adaptive piezoelectric energy harvesting circuit for wireless remotepower supply,” *IEEE Trans. Power Electron.*, vol. 17, no. 5, pp. 669–676, Sep. 2002.
- A. Tabesh and I.C. Grechette, “a low-power stand-alone adaptive circuit for harvesting energy from a piezoelectric micropower generator,” *IEEE Trans. Industrial Electronics*, vol. 57, no. 3, pp. 840–849, Mar. 2010.
- S. Yang and G.A. Rincón-Mora, “Least lossy piezoelectric energy-harvesting charger,” *in proc. IEEE International Midwest Cir. Syst.*, Dallas, TX, Aug. 2019.